



The Specialist in Advanced NDT

ACCUTRAK LT



- API 653 B-Scan Tank Inspection
- Phased Array/TOFD Weld Inspection
- Modular and Upgradable to 3-Axis
- Battery Powered (8-hour run time)

Low cost solution for remote UT scanning applications

Compatible With: ProScan, OmniScan, TD Scan, M2M, Zetec, VEO, and more



Accutrak LT

The AccuTrak LT was developed for remote B-Scan applications such as API 653 tank inspection and for Phased-Array/TOFD weld inspection. The AccuTrak LT scanner is controlled by a small 2-axis manual motor controller using a hand held joystick and does not require a computer to operate it.

The AccuTrak LT can scan up to 6" per second and can climb vertically over weld seams as high as 3/4" without hang ups or falling off. The system comes with a battery pack that can provide the scanner up to 8 hours of run time and also an AC/DC power supply and 100ft umbilical.

We offer 2 versions of systems that can be purchased; the TankScan (B-Scan) and WeldScan (Phased array and TOFD). The Tank Scan version comes with probe gimble, 5MHz composite 3/8" diameter element dual transducer, probe skid and cable. The WeldScan version comes with 2 probe gimbles bar kit and laser line; all fitting into one shipping case to make it ultra-portable.

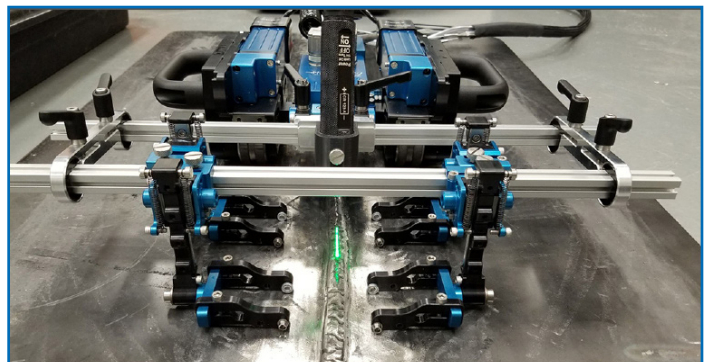
The AccuTrak LT is a modular designed scanner so modifications or repairs can be done in the field within in minutes. A huge benefit of this scanner is the ability to be upgraded to a 3-axis computer controlled raster scanning system for remote C-scan applications.

Ask yourself this, why buy a scanner to perform only one duty when you can buy one scanner that can perform many.

Features



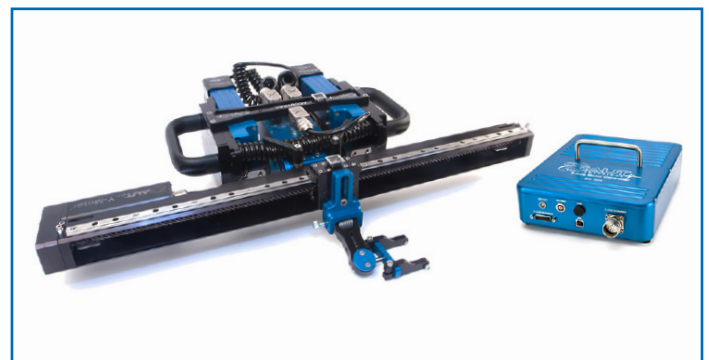
Tank and Vessel Corrosion Inspection Version



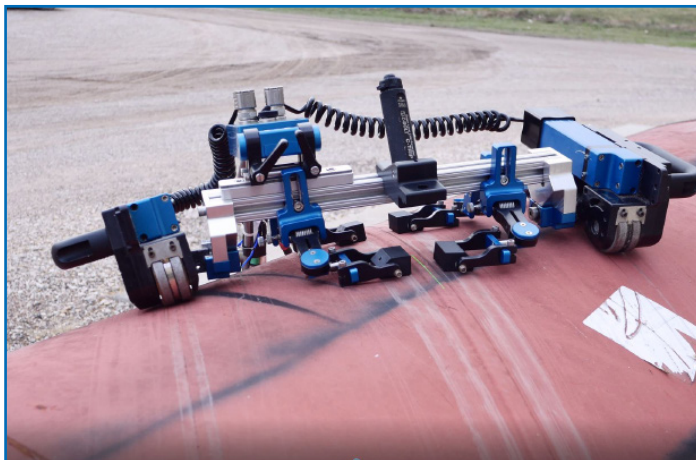
Weld Inspection Version



Modular Design



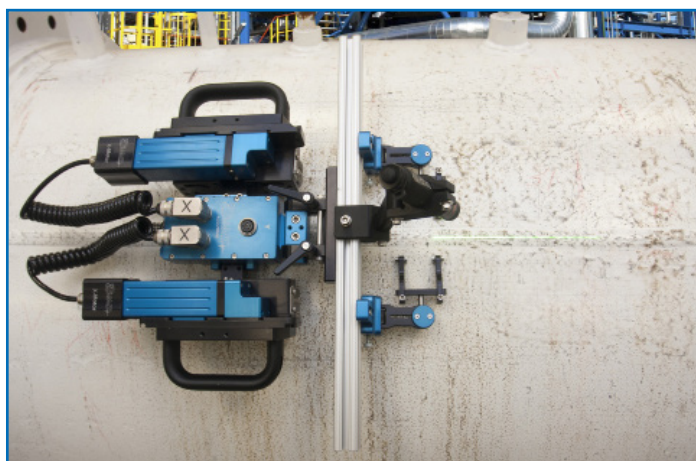
Upgradeable To Computerized 3-Axis System



Weld Inspection with Optional Catamaran Kit

Capabilities

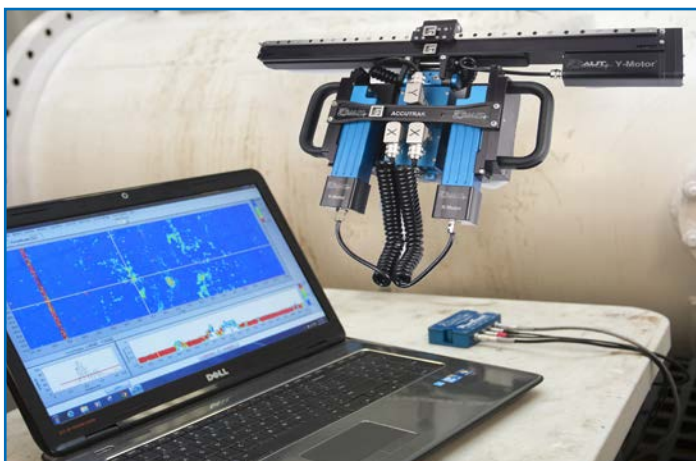
- Fast - 6"/sec (150mm/sec)
- Modular - Change parts in seconds
- Mobility - Zero turn within 12" radius
- Power - VAC or battery pack
- Compatible - Most UT systems w/encoder input
- Portable - Ships in one case
- Practical - Circ OD scans: 4" greater
Axial OD Scans: 8" greater



Typical setup for Weld Inspection

Includes

- 100 ft umbilical
- 2-axis manual motor controller
- Joystick
- Shipping case
- Battery pack and AC/DC power supply
- TankScan version - 5MHz probe, skid, gimble
- WeldScan version - 2 gimble kit with line laser
- 1 year factory warranty



Optional ProScanXT UT Data Acquisition System

Optional Accessories

- ProScanXT Ultrasonic System w/ software
- 3-axis conversion kit
- Longer or short umbilicals
- Extra battery pack
- Thickness probes of varies size and frequency
- Weld Inspection gimbles and brackets
- Water irrigation pump system
- Catamaran weld scanner conversion kit
- EMAT probe holders

Specification

Scanner Truck Dim/Wt.

- Length 13.5"
- Width: 10.5"
- Height: 4.25"
- Weight: 17 lbs
- Shipping case

Max Scanning Speeds

- Wheel: 6"/sec."

Encoder Resolution Per Tick

- X-axis (Wheel): 0.00002"

Motor Controller Dim/Wt.

- Length: 5"
- Width: 4"
- Height: 1.5"
- Weight: 1.3 lbs

Power Input

- 85 VAC to 265 VAC

Power Output

- 36 vdc
- 6.7 amps

